
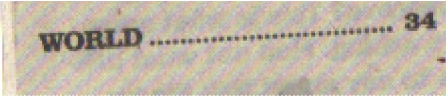
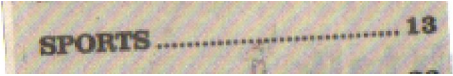
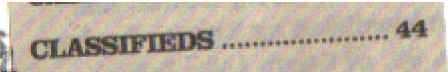
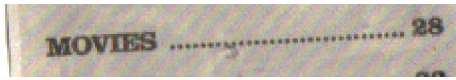


CUT THE CARDS AND PUT THEM FACE DOWN. TRY TO MATCH EACH CARD WITH ITS PARTNER.

	<p>Where would you find an opinion about Washington DC?</p>
	<p>Where would you find out about Iraq?</p>
	<p>Where would you find out who won the crosscountry meet?</p>
	<p>Where would you find an advertisement for a used car?</p>



Where would you find where Shrek 3 is playing?



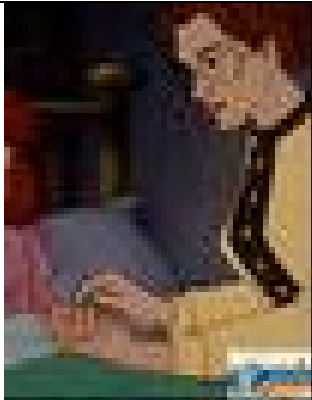
Brian

Courageous and Resourceful



Helen Keller

Stubborn and Angry



Helen's Teacher - Anne

Patient and Kind



Iron Will

Determined and Strong



Borg (the 'bald guy')

Egotistical and Evil



Ella

Obedient and Kind



Hattie the step-sister

Conceited and Mean



FBI Special Agent

Loyal and Honest